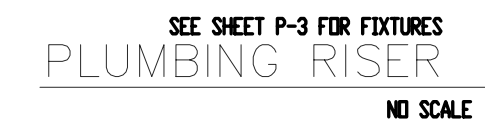


THIS BOOTH IS PROVIDED COMPLETE FROM MANUFACTURER (PART # 1466R (EXTENDED TO 18'-6" LONG) WITH THE FOLLOWING STIPULATIONS:
 1. WATER CLOSET SINK AND WATER HEATER ARE SHIPPED LOOSE FOR CONNECTION IN FIELD.
 2. SEWER AND WATER ARE TO CONNECT AS INDICATED. ADD INSULATION TO LAVATORY SUPPLIES AND DRAIN.
 3. WATER HEATER IS TO PLUG INTO DEDICATED RECEPTACLE INCLUDED BY MANUFACTURER.
 4. MANUFACTURER IS TO INCLUDE WALL HEATERS, EXHAUST FAN AND ROOF MOUNTED AIR CONDITIONING UNIT COMPLETE WITH CONTROLS.
 5. ELECTRICAL CONTRACTOR SHALL CONNECT NEW PANEL PROVIDED BY MANUFACTURER. BOOTH CONTAINS ALL RECEPTACLES AND LIGHTS SHOWN AND BRANCH CIRCUITS TO ALL DEVICES. CONTRACTOR TO INSTALL AND CONNECT BUILDING GROUND AND VERIFY ALL FIXTURES, LAMPS ETC ARE IN PLACE AS SHOWN. EXTERIOR LIGHT TO INCLUDE FLUORESCENT LAMP.

1
GUARD STATION
EXPANDED FLOOR
PLAN - PLUMBING
 P-4 SCALE: 1/4" = 1'-0"



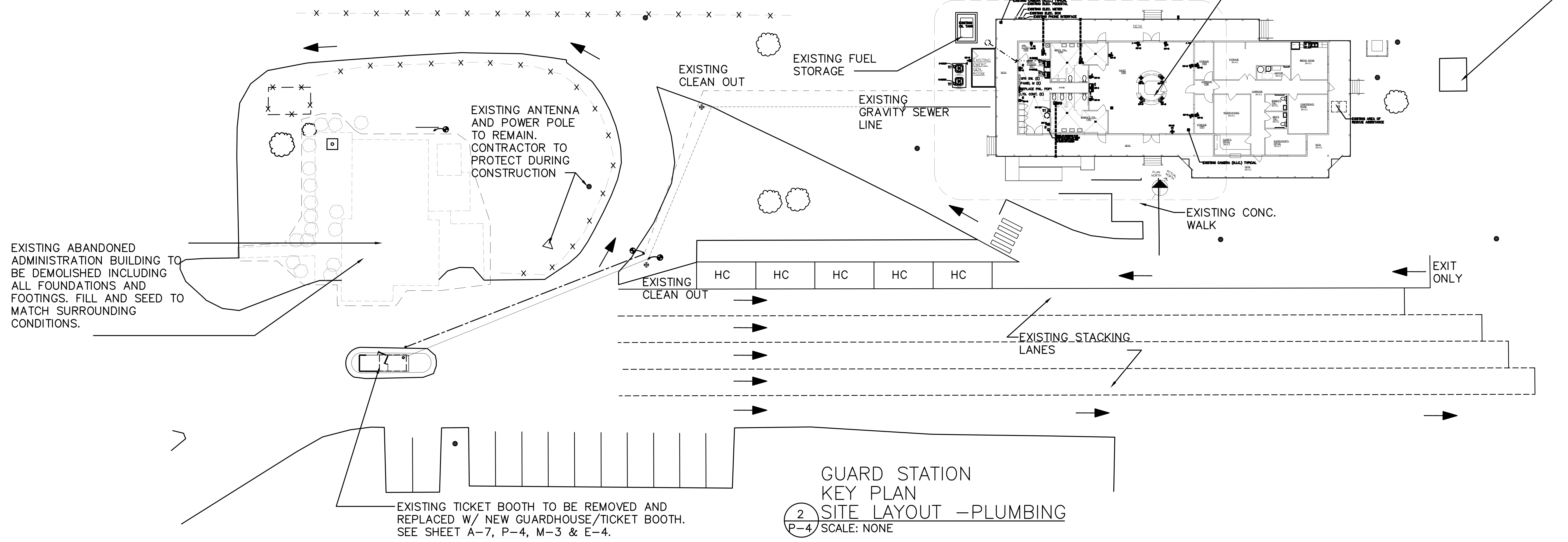
SEE SHEET P-3 FOR FIXTURES
PLUMBING RISER
 NO SCALE

PLUMBING LEGEND

- COLD WATER
- HOT WATER
- WASTE LINE
- VENT LINE
- WALL CLEAN OUT
- FINISHED GRADE CLEAN OUT
- FINISHED FLOOR CLEAN OUT
- WATER OUT OFF VALVE
- POINT OF CONNECTION NEW TO EXISTING

PLUMBING FIXTURES CALCULATION							
BUILDING CLASSIFICATION - GUARD BOOTH		MEN : 1		WOMEN : 1		TOTAL : 1	
AREA : .111 SF							
MARK	DESCRIPTION	CODE	REQUIRED	FIXTURES	ACTUAL	FIXTURES	
		MEN	WOMEN	COMMON	MEN	WOMEN	COMMON
L1/L2	LAVATORIES	-	-	1	-	-	1
W1/W2	WATER CLOSETS	-	-	1	-	-	1
U1	URINALS	-	-	-	-	-	-
EWC	WATER COOLER	-	-	0	-	-	0
SH	SHOWERS/TUBS	-	-	-	-	-	-

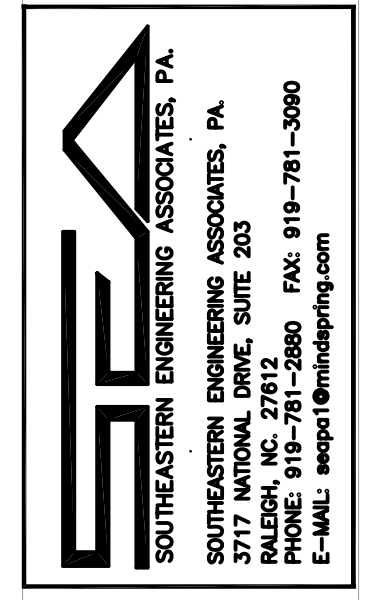
AREA OF RENOVATION



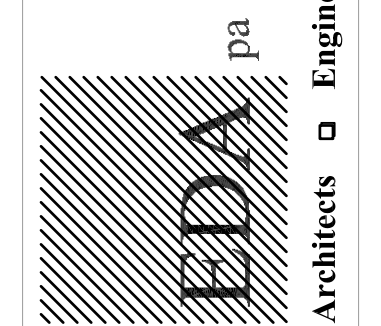
2
GUARD STATION
KEY PLAN
SITE LAYOUT - PLUMBING
 P-4 SCALE: NONE



NOVEMBER 13, 2008



1007 Shepard Street
 Morehead City, North Carolina 28557
 Telephone: 252-247-2127 Fax: 252-247-0674
 Email: eda@eda-planners.com



CEDAR ISLAND FERRY
OFFICE RENOVATION
CEDAR ISLAND, NORTH CAROLINA

08-046

2007412

ISSUED: 08-12-08

DWG BY: MLR

CKD BY: RMB, LDD

REVISIONS

SHEET NO.

P-4

OF