

McCarte
 NORTH CAROLINA
 PROFESSIONAL ENGINEER
 WAYNE CARTER
 NOVEMBER 13, 2008

1007 Shepard Street
 Morehead City, North Carolina 28557
 Telephone: 252.247.2127 Fax: 252.247.0674
 Email: eda@edaup.com

Architects Engineers Planners
EDA pa

Architects Engineers Planners
EDA pa

Architects Engineers Planners
EDA pa

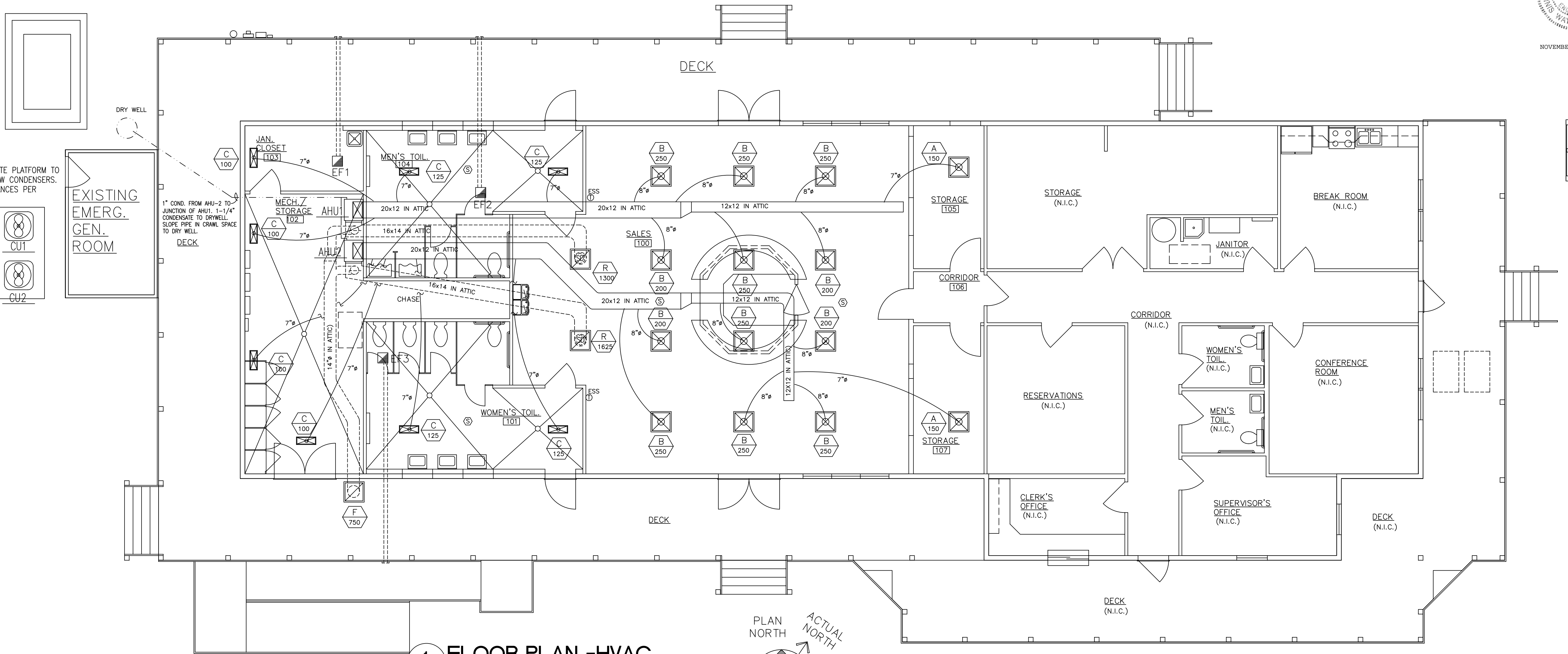
**CEDAR ISLAND FERRY
 OFFICE RENOVATION
 CEDAR ISLAND, NORTH CAROLINA**

08-046
 2007412

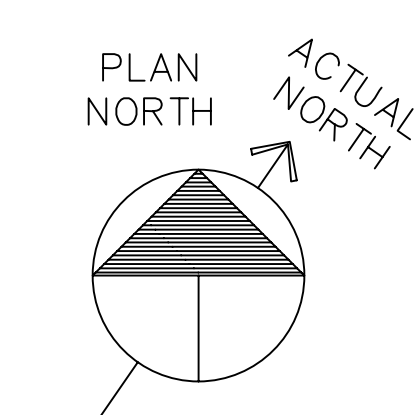
ISSUED: 08-12-08
 DWG BY: MLR
 CKD BY: RMB, LDD

REVISIONS

SHEET NO.
M-1
 OF 2



1 FLOOR PLAN -HVAC
 M-1 SCALE: 3/16" = 1'-0"



H.V.A.C. EQUIPMENT & ELECTRICAL SCHEDULE														
UNIT NO.	DESCRIPTION	ARI CLG.	ARI SEER	ARI HTG.	EFF.	CFM/S.P.	MAKE	MODEL	DESIGN TEMP. DB/WB	OUTDOOR AIR CFM	VOLTS /phase	M.C.A. AMPS	FUSE SIZE	THW CU BRANCH CIRCUIT
AHU1	VERTICAL AIR HANDLER			11.3KW	100%	2000/0.3	CARRIER	FY4ANF060015	16' 94'/75'	375	208/3	47.7	50A	# 6
AHU2	HANDLER													
CU1	AIR COOLED	59.5M	13.0	58.5M	7.9		CARRIER	25HBR360A005	16' 94'/75'	-	208/3	24.6	30A	# 10
CU1	HEAT PUMP													

VENTILATION AIR CALCULATION							
BUILDING CLASSIFICATION : BUSINESS				OCCUPANCY PER BUILDING CODE : 40			
FLOOR AREA : 2,550 SF (VISITOR CENTER)				FRESH AIR CALCULATED PER ASHRAE 62			
				CFM PER OCCUPANT : --			
		CODE REQUIRED AIRFLOW		ACTUAL AIRFLOW			
MARK	DESCRIPTION	CALCULATION	SUPPLY	RETURN	FRESH AIR	EXHAUST	
AH	AIR HANDLERS		4000	3250	750		
RTU	ROOFTOP UNITS		-	-	-	-	
F	FURNACES		-	-	-	-	
EF	EXHAUST FANS	(1198 SF X 0.12 CFM/SF + 40 PEOPLE X 7.5 CFM/PERSON + 1237.3 SF X 0.15 CFM/SF)				725	
KEF/KSF	KITCHEN EXHAUST HOOD					-	
			4000	3250	750	725	
			= 712 CFM				

EXHAUST FAN SCHEDULE								
MARK	DESCRIPTION	CFM	S.P.	MAKE	MODEL	HP/AMPS	VOLTS	REMARKS
EF1	CEILING MTD. EXHAUST FAN	109	0.12	BROAN	L100	1.1A	6"φ	DUCT TO ROOF CAP. RUN CONTINUOUSLY
EF2	CEILING MTD. EXHAUST FAN	308	0.12	BROAN	L300	2.6A	8"φ	DUCT TO WALL CAP. RUN CONTINUOUSLY
EF3	EXHAUST FAN							