



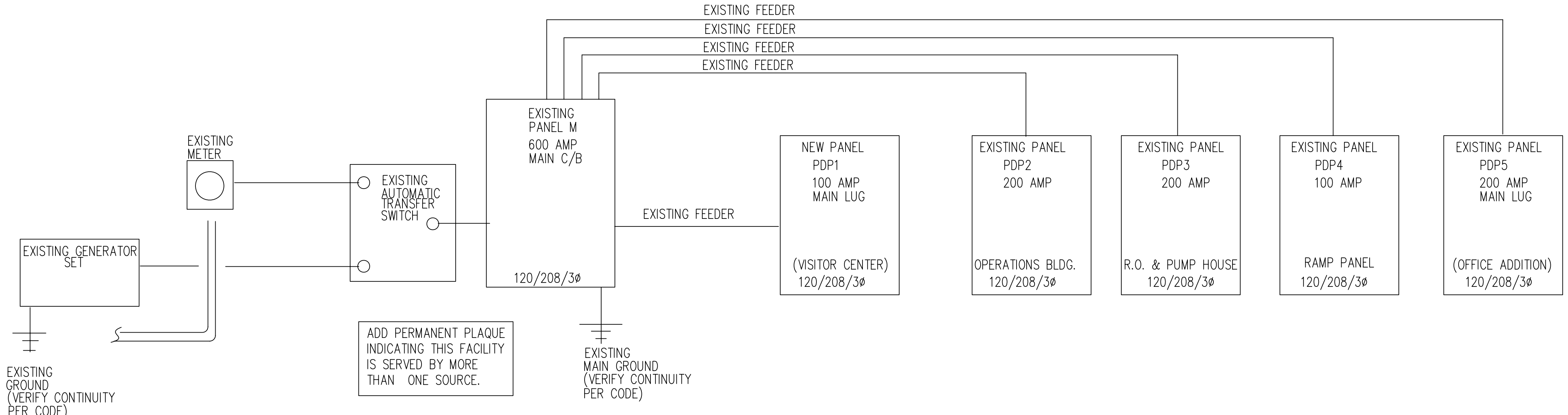
NOVEMBER 13, 2008

GENERAL SPECIFICATIONS : ELECTRICAL ALL CONTRACT DRAWINGS AND ALL SPECIFICATIONS ARE COMPLEMENTARY TO EACH OTHER. WORK INVOLVING SPECIFIC TRADES MAY BE SHOWN OR INDICATED THROUGHOUT THE CONTRACT DRAWINGS. PLANS ARE SCHEMATIC IN NATURE AND ARE NOT TO BE SCALED. REFER TO ARCHITECTURAL PLANS FOR DIMENSIONS AND TO VERIFY LOCATIONS, HEIGHTS, DISTANCES ETC.

- The intent of these plans and specifications is to provide a complete operable electrical distribution system. All work under this Contract shall be accomplished in strict accordance with National, State, and Local codes and the "Americans with Disabilities Act" of 1990. Where these Plans and Specifications are in conflict with such Codes, the Codes shall govern. Electrical Contractor shall notify Architect or Engineer of such conflicts in writing prior to receipt of bids.
- This contract includes complete service from utility point of delivery. All equipment to be service entry rated and labeled, unless otherwise indicated. All equipment to be rated for expected maximum AIC fault current.
- This contract includes all necessary fees and sales tax.
- This contract includes complete one-year warranty on all material and workmanship from date of completion.
- Service conductors are to be run in rigid metallic conduit where overhead or schedule 40 PVC where underground or underslab. Grounding electrode in rigid metallic conduit. Other wiring may be run in EMT (or AC where not subject to mechanical abuse). All wiring must run in raceway.
- Service conductors and feeders to be THWN or THHN copper. All wire terminations & equipment to be rated for 75 degree C wire.
- Branch circuits to be THHN copper, except in fluorescent channels to be THHN copper. No aluminum branch circuits will be accepted. Frames of range and clothes dryers to be grounded through receptacles with grounding circuit conductors.
- Maximum wattage of fluorescent or incandescent lighting per 120V 20A branch circuit - 1440 watts. Maximum number of 120V duplex receptacles per 20A circuit - eight. Minimum branch circuit size #12 copper. All new fluorescent fixtures to have electronic or 90% + power factor ballasts and T-8 tubes. All designated receptacles to be on separate branch circuits. On renovated spaces where branch circuits are reused, Electrical contractor shall be responsible for measuring circuit amperage under load as per N.E.C. section 220.35 and reporting any "overloads" to Engineer in writing unless field observation verifies total load calculated as per 180 v-a/receptacle, nameplate wattage x 125% for lighting and connected loads for other equipment.
- In all instances, wire capacities and device ratings are to equal or exceed breaker or fuse ratings.
- For three-phase systems, Electrical Contractor is responsible for achieving optimum balance across L1, L2, and L3, measured at service conductors. Also Electrical contractor is responsible for verifying that phase loading does not exceed N.E.C. table 310.16 rating.
- Fused disconnects are required unless noted otherwise. Fuse per M.O.C.P. rating per manufacturer or N.E.C. as required.
- Provide 120V W/P GFI servicing receptacle within 25 feet of HVAC equipment on roof or grade level outdoors.
- Provide GFI receptacles in restrooms, outdoors and also as required by N.E.C. and N.C. Building Code.
- Do not install any electrical equipment, accessories, or fixtures without proper code-required clearances or without manufacturer's recommended service clearances.
- Provide exit lights as required or as shown on drawings on unswitched local lighting circuit or "locked" dedicated circuit breaker.
- Provide emergency or security lighting as required or as shown on drawings on unswitched local lighting circuit or "locked" dedicated circuit breaker.
- Telephone - Provide 2" conduit stubbed out exterior wall from building or to service entrance designated by utility. Unless otherwise noted, extend type 5 cable in 3/4" emt to each outlet and telecom transient surge suppressor on main secondary entrance. On renovation projects, extend wiring & conduit to existing board only.
- All penetrations in fire rated assemblies to be sealed with 3-M Fire Barrier moldable putty installed in strict accordance with U.L. listing and manufacturer installation information.
- All recessed lights in rated ceilings shall be protected in strict accordance with applicable U.L. approved "tenting" procedure. See details and confirm ceiling design with architectural drawings.
- Grounding conductor at main switchgear shall be connected to equipment grounding conductor using a bonding jumper, sized per N.E.C. Table 250.66.
- All signage to be field located with owner. Control via seven day and seasonally adjusted timeclock with four hour battery back-up. A similar timeclock shall be used for exterior lights so indicated.
- Shunt breakers, where indicated, are to be coordinated with Kitchen hood or fire alarm contractor with all low-voltage control wiring by such contractors. Power wiring as required is included under this contract.

ELECTRICAL LEGEND

- TRACK LIGHT (VERIFY LOCATIONS)
- 1x4 FLUORESCENT FIXTURE
- 2X2 FLUORESCENT LAY-IN FIXTURE
- WALL/CEILING MOUNT INCANDESCENT FIXTURE
- CEILING MOUNT EXHAUST FAN
- FUSIBLE DISCONNECT SWITCH TOP: AMPS & POLES, BOTTOM: NEMA CLASS
- NEW PANEL
- WEATHER PROOF
- ABOVE FINISHED FLOOR
- EXISTING
- DEDICATED
- SWITCHLEG
- SWITCHED CIRCUIT
- UNSWITCHED CIRCUIT
- DUPLEX RECEPTACLE (INDICATING CENTERLINE MOUNTING HEIGHT)
- GFI PROTECTED OUTLET
- QUADRAPLEX OUTLET MILLWORK MOUNTED (VERIFY LOCATION)
- QUADRAPLEX DATA/COMMUNICATION OUTLET (MATCH EXISTING) WIRING BY OWNER
- SPEAKERS REMOVE FOR ANY DEMO/PAINTING REPLACE CEILING COVER AND REATTACH AS DIRECTED BY OWNER
- PHOTOCCELL FOR EXTERIOR LIGHTS. (CONTRACTOR MAY REUSE EXISTING AFTER VERIFYING OPERATION)
- EXISTING CAMERA FOR SECURITY SYSTEM. (LEAVE INTACT FOR USE BY OWNER)
- MOTION SENSOR FOR INTERIOR LIGHTING CONTROL WITH VARIABLE TIME DELAY
- WALL/ MILLWORK DIMMER. MOUNT AT MAXIMUM 45" A.F.F. (COORDINATE LOCATION WITH OWNER)
- WALL MOUNT SINGLE POLE WALL SWITCH. MOUNT AT 45" A.F.F. (COORDINATE LOCATION WITH OWNER)



EDA
Architects & Engineers & Planners

1007 Shepard Street
Morehead City, North Carolina 28557
Telephone: 252.247.2127 Fax: 252.247.0674
Email: eda@eda.com

SOUTHEASTERN ENGINEERING ASSOCIATES, P.A.
3717 NATIONAL DRIVE, SUITE 203
RALEIGH, NC 27612
919-108-2660 FAX: 919-781-3690
E-Mail: sepa@sepaengineering.com

EDA
Architects & Engineers & Planners

1007 Shepard Street
Morehead City, North Carolina 28557
Telephone: 252.247.2127 Fax: 252.247.0674
Email: eda@eda.com

These drawings, specifications and instruments of service for use in connection with the project for which they are prepared are the property of EDA. The owner shall be permitted to use the information and reference information contained herein for other projects only with the prior written consent of EDA. EDA shall not be held responsible for any errors or omissions in these drawings, specifications and instruments of service. EDA shall not be held responsible for any damage or injury to persons or property resulting from the use of these drawings, specifications and instruments of service.

**CEDAR ISLAND FERRY
OFFICE RENOVATION
CEDAR ISLAND, NORTH CAROLINA**

08-046
2007412

ISSUED: 08-12-08
DWG BY: MLR
CKD BY: RMB, LDD

REVISIONS

SHEET NO.
E-3
OF 3